

USER MANUAL



by **femkes**

Getting started

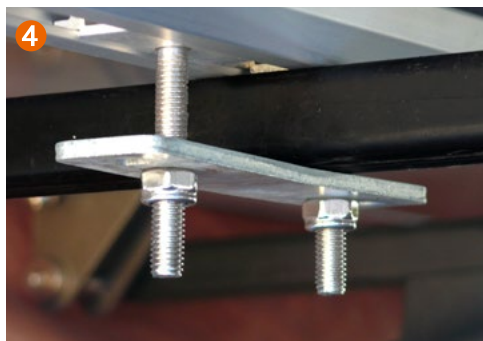
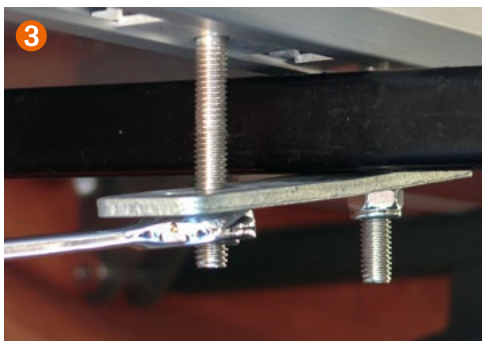
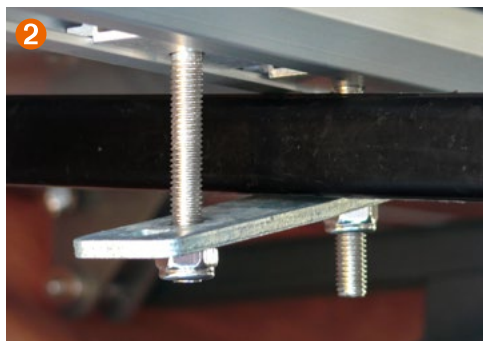
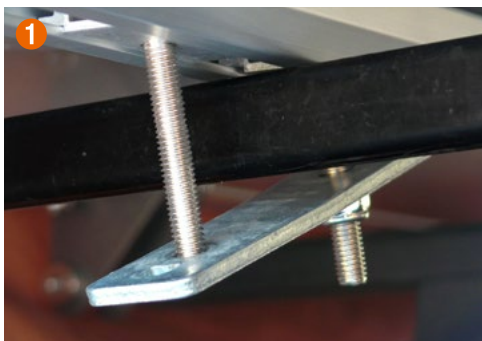
Congratulations, you’ve bought a femkes rooftop! Please check the following items are included when opening your box:

	MILES ON TOP	MILES STARLING
1 Flexible poles	6	4
2 Mounting set in a bag	✓	✓
3 1 telescopic 2.3 m ladder in a bag	✓	✓
4 1 shoebag	✓	✓
2 caravan rails for Kajto annex awning	✓	✓
4 gas struts	✓	✓
1 luggage net	✓	✓
5 1 Kajto annex awning	-	✓
6 3D mesh under the mattress	-	✓



How to mount your rooftop tent

- Open the box
- Remove cardboard and foam
- Place your Miles on the cross bars of your car
- Centre Miles on top of your car
- Insert two square-head bolts or sliders into the front of the rail
- 1 Lift the tent and slide slider with bolt over the cross bar
- 2 Insert second slider with bolt
- Step and repeat for the back of the rail
- 3 Add the bar to the bolts
- 4 Connect the nuts but not too tight yet
- Check if tent is centred properly
- Use the spanner to tighten the nuts, front first
- Then tighten the nuts on the back of the rail



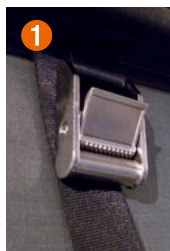
IMPORTANT

- Tighten the two bolts simultaneously per cross bar
- Don't tighten too far
- The bar needs to stay horizontal and shouldn't bend
- Double check all bolts
- Check again after the first 100 kms of driving
- Repeat regularly
- Keep all screws and bolts clean and serviced with WD40

Opening and closing your tent

Opening the tent

- 1 Open the tent by loosening the 2 buckles and push one side up
- 2 Walk around the tent and loosen the next 2 buckles, push other side up
- 2 Pull the skirt down around the corners
- 3 Add the flex poles to the side and the back entrance of the Miles on Top. Please note, the holes for the flex poles are at an angle. Push the pole in horizontally and bend to connect to the O-ring in the awning/door



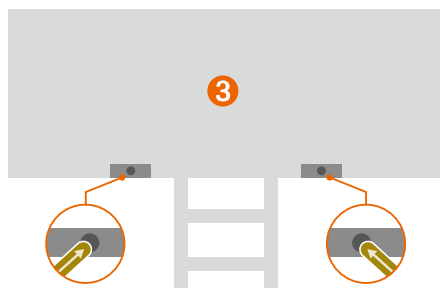
Closing the tent

- Close the tent in the reverse order: Remove flex poles first and put them in the bag, lift up the skirt around the edges to a vertical position and push the fabric into the tent. Don't close the zippers of the tent completely as air needs to be able to leave the tent. Tuck in the fabric on both sides and pull one side down first. Don't forget to push the pulling cord in to the tent

- Pull one side down first by pulling vertically in the middle of the tent.

Don't pull towards you as the top shell will shift position. Close the buckles for 50% and walk around the tent to pull the other side down and close the buckles

- Once the tent is closed, push the remaining fabric into the tent. Push the pulling cords into the tent and close the buckles to 100% on both sides. Check all 4 buckles before you drive away
- You can put the ladder in the bag, into the tent or stow your ladder in the car. Blankets and pillows can stay, flat, in your tent



OPERATION OF THE LADDER

CAUTION! Failure to properly secure the ladder could cause serious injury. Read the next steps carefully before attempting to use the ladder.

- Depending on the height of your car, hold 3-4 rungs at the top and pull out the bottom rungs until they reach the ground
- If you have a low car, you might need to hold 5 rungs. If you are on a high car, you only might need to hold 2 rung or less
- It is also possible to lock the steps by half a rung
- Make sure the ladder is placed on even, solid ground. Do not install the ladder on uneven or sandy/muddy ground
- Place the ladder firmly at an approximate 70 degrees angle
- The ladder should not be installed and used in a vertical position, always at a slight angle for better support
- Before entering the tent, check if every rung is secured. Use two hands to climb up, one step at the time

Getting started

Congratulations, you’ve bought a femkes rooftop! Please check the following items are included when opening your box:

	MILES ON TOP	MILES STARLING
1 Flexible poles	6	4
2 Mounting set in a bag	✓	✓
3 1 telescopic 2.3 m ladder in a bag	✓	✓
4 1 shoebag	✓	✓
2 caravan rails for Kajto annex awning	✓	✓
4 gas struts	✓	✓
1 luggage net	✓	✓
5 1 Kajto annex awning	-	✓
6 3D mesh under the mattress	-	✓



Accessories & maintenance

To upgrade your tent, we offer the following:



Winter liner is only available for the Miles Starling



Anti-theft set of nuts and bolts M8

Maintenance

Be nice to your dearest friend Miles:

- Always make sure the fabric of the tent and the mattress are dry before long term storage
- Always ventilate well, also in moist weather. Ventilation is important at all times
- Keep all stainless steel and aluminium parts clean and spray them with WD40 regularly
- The shell can also be cleaned with a soft cloth and sprayed with WD40 for a nice shine

More questions?

Please ask your local reseller

femkesrooftoptents.com

WARNING

- The rooftop tent needs to be mounted and connected to roofbars or roof rack prior to climbing into the rooftop tent
- If you have any back, knee or other health issues, do not attempt to climb the tent on top of your vehicle
- The crossbars must have a dynamic weight load of minimum 55 kg and must be at least 70 cm apart
- Under no circumstances should any flame sources be used inside the tent
- When camping, keep a safe distance with open fires in order to avoid airborne burning embers
- Open the zippers by using the pullers, not by pulling or tearing at the fabric

by **femkes**

WARRANTY: We offer a 2 year warranty on the Khosi rooftop tents. Warranty does not apply on zippers and other closures. Warranty does not apply for damage to the tent caused by any of the weather elements, wind or rain. Warranty does not apply caused by improper usage of the tent, i.e. forgetting to remove the rods from the gas struts inside the tent. Note: the recommended speed limit when driving with a rooftop tent on your vehicle is 120 km/h. Your driving speed should be adjusted according to the driving conditions, such as road type and road quality, weather (wind, rain or snow) and applicable speed limits. Decrease your speed for speed bumps and on bumpy roads.